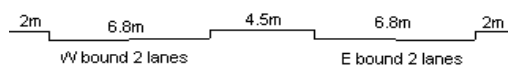
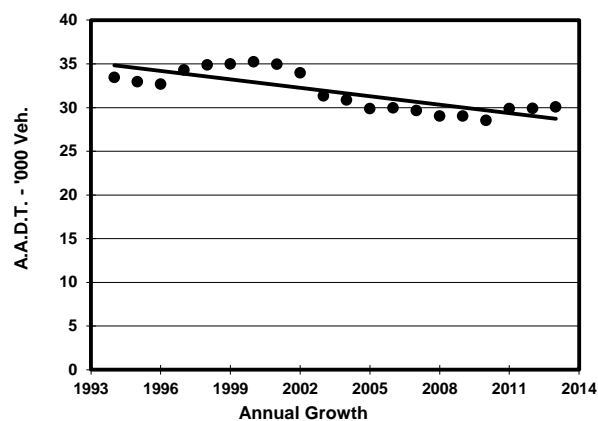
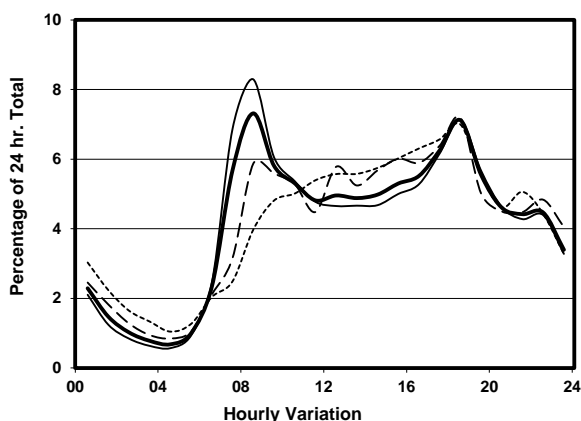
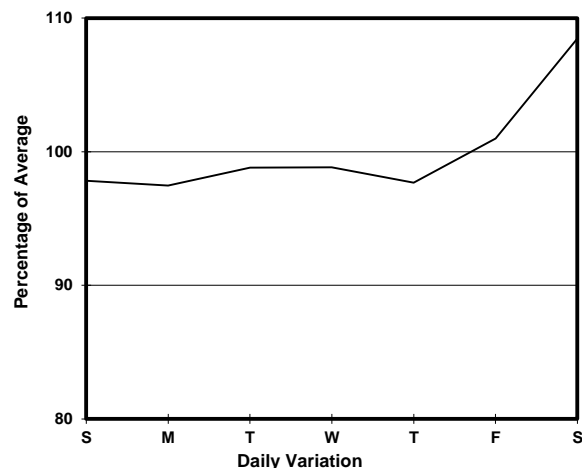
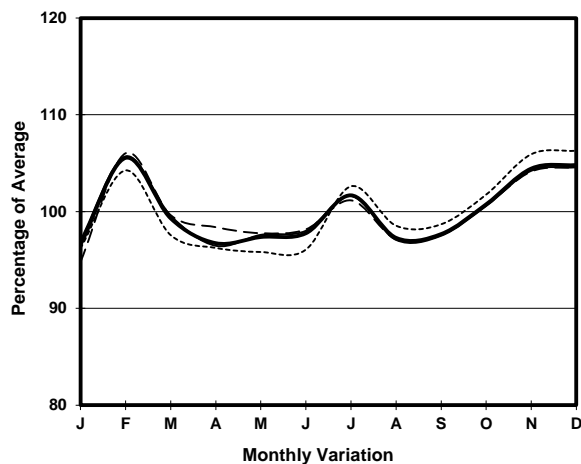


YEAR 2013  
CORE STATION 5017  
ROAD NETWORK MAJOR  
ROAD TYPE RURAL ROAD

LINK CLEAR WATER BAY RD (from ANDERSON RD to  
HIRAM'S HIGHWAY)



## 1. TRAFFIC FLOW VARIATION AND GROWTH



## 2. TRAFFIC CHARACTERISTICS (BY DIRECTION)

Parameter	All - Day	Mon. - Fri.	Sat.	Sun.
<b>EAST BOUND</b>				
A.A.D.T.	14710	14460	15980	14730
R 12 / 24 - %	62.9	62.9	63.6	62.3
R 16 / 24 - %	86	87	84.2	83.5
AM Peak Hour	0800-0900	0800-0900	0800-0900	0900-1000
One-way flow at AM peak hour	830	900	770	660
T - % (AM)	-	7.3	-	-
PM Peak Hour	1800-1900	1800-1900	1800-1900	1600-1700
One-way flow at PM peak hour	1080	1110	1110	890
T - % (PM)	-	3.3	-	-
Prop.of commercial vehicles - 16 hr.	-	5.8	-	-
<b>WEST BOUND</b>				
A.A.D.T.	15360	15240	16670	14720
R 12 / 24 - %	72.8	74.7	69.5	66.7
R 16 / 24 - %	88	88.9	86.6	84.8
AM Peak Hour	0800-0900	0800-0900	0800-0900	0900-1000
One-way flow at AM peak hour	1370	1570	1150	760
T - % (AM)	-	4.1	-	-
PM Peak Hour	1800-1900	1800-1900	1800-1900	1800-1900
One-way flow at PM peak hour	1060	1010	1240	1180
T - % (PM)	-	3.3	-	-
Prop.of commercial vehicles - 16 hr.	-	5.7	-	-

## 3. OTHER INFORMATION AND COMMENT

**4. Vehicle classification and occupancy - Monday to Friday**

Time		Class of vehicle									
		Motor	Private	Taxi	Private	PLB	Goods veh.		Non	Fr. Bus	
		Cycle	Car		LB		Light	M & H	Fr. Bus	SD	DD
0700-0800	Pro	4.1	56.8	8.2	2.4	13.2	6.5	2.0	5.6	0.0	1.2
	Ocp	1.3	1.6	2.0	5.9	14.0	1.6	1.0	17.7	0.0	52.0
0800-0900 Peak hour	Pro	5.3	60.2	9.7	0.6	7.6	11.0	2.1	2.1	0.0	1.3
	Ocp	1.1	1.5	2.1	4.0	16.2	1.7	1.4	5.5	0.0	51.1
0900-1000	Pro	2.7	59.3	9.9	1.7	9.9	11.2	2.1	1.7	0.1	1.7
	Ocp	1.0	1.4	1.8	3.6	12.0	1.6	1.4	14.8	1.0	40.5
1000-1100	Pro	3.3	48.7	11.4	0.5	10.7	18.0	3.8	2.3	0.0	1.3
	Ocp	1.1	1.4	1.9	1.0	10.1	1.6	1.7	1.6	0.0	37.3
1100-1200	Pro	2.2	48.7	12.6	0.6	10.1	19.5	3.8	0.9	0.0	1.6
	Ocp	1.1	1.5	2.4	5.0	11.8	1.6	1.3	1.0	0.0	34.8
1200-1300	Pro	2.3	49.6	15.2	2.9	10.0	12.9	3.2	2.3	0.0	1.6
	Ocp	1.0	1.5	2.2	5.8	10.5	1.6	1.5	5.6	0.0	26.5
1300-1400	Pro	3.4	47.0	16.3	2.1	9.8	12.6	5.2	1.8	0.0	1.8
	Ocp	1.2	1.6	2.0	2.4	12.0	1.6	1.4	28.8	0.0	28.1
1400-1500	Pro	4.0	43.9	11.6	1.2	10.1	20.4	5.8	1.5	0.0	1.6
	Ocp	1.0	1.4	1.6	3.0	12.0	1.5	1.2	2.4	0.0	23.2
1500-1600	Pro	1.5	47.9	15.4	2.8	8.3	16.6	2.8	3.1	0.0	1.7
	Ocp	1.0	1.4	2.2	4.3	14.0	1.5	1.0	19.0	0.0	30.9
1600-1700	Pro	2.8	47.8	10.8	1.0	9.5	20.5	2.3	3.3	0.0	1.9
	Ocp	1.1	1.6	2.0	3.0	14.3	1.6	1.3	8.7	0.0	35.8
1700-1800	Pro	6.5	52.0	12.9	3.0	9.3	11.8	1.9	1.1	0.0	1.6
	Ocp	1.0	1.6	2.8	4.7	14.7	1.6	1.2	18.4	0.0	45.2
1800-1900	Pro	3.4	67.9	11.8	0.2	7.5	5.9	0.9	1.1	0.0	1.3
	Ocp	1.2	1.6	3.2	1.0	15.5	1.6	1.0	28.3	0.0	52.0
1900-2000	Pro	3.7	65.3	14.2	0.5	12.1	2.3	0.0	0.5	0.0	1.6
	Ocp	1.3	1.5	2.1	1.0	11.7	1.2	0.0	13.5	0.0	30.0
2000-2100	Pro	3.2	59.3	19.9	0.0	8.2	6.9	0.6	0.3	0.0	1.6
	Ocp	1.2	1.5	1.8	0.0	10.1	1.4	1.0	1.0	0.0	24.3
2100-2200	Pro	6.1	51.0	20.4	0.0	16.3	2.5	0.5	0.5	0.1	2.5
	Ocp	1.1	1.3	1.9	0.0	10.3	1.6	1.0	14.0	1.0	19.1
2200-2300	Pro	4.6	57.7	17.5	0.0	11.7	4.9	0.3	1.5	0.0	1.8
	Ocp	1.1	1.5	2.1	0.0	10.5	1.4	1.0	12.0	0.0	15.7
16 hours	Pro	3.7	54.9	13.0	1.2	10.0	11.3	2.3	1.9	0.1	1.6
	Ocp	1.1	1.5	2.2	4.2	12.6	1.6	1.3	13.1	1.0	35.2

**Legend**

- Pro.** Proportion of vehicles in % (Sum may not add up to 100% due to figure rounding)
- Ocp.** Average occupancy of vehicles
- M&H** Medium and Heavy